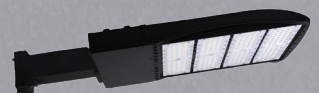
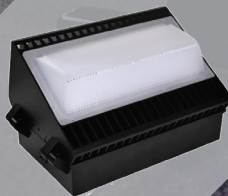
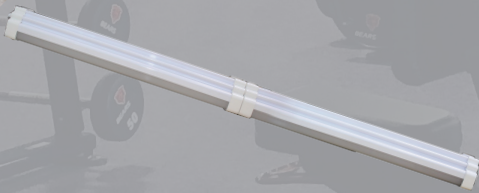
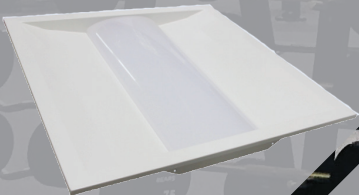
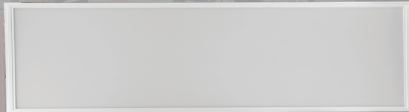




**ALSET**<sup>®</sup>  
LED LIGHTING

A Division of NuWave<sup>®</sup> LLC



**2020 CATALOG**







## About

NuWave® has changed the way we live. NuWave shot into the limelight with its flagship product: the NuWave Oven – a pioneering countertop oven that combines infrared, conduction, and convection heat to offer easy and healthy cooking. Like every other NuWave product, ALSET LED Lighting has been designed to improve lives and help save the environment. A result of the founder's vision for energy-efficient and smart lighting technologies, ALSET LED Lighting was formed in 2012.

## Our Mission

### Live Well For Less

Our mission is to deliver our very best and create a range of products that are energy efficient and environment-friendly. We are passionate about health, safety, and the environment, and this is reflected in every eco-friendly product that we create.

### Our work is driven by the philosophies of:

- **Safety** – Safety is paramount at NuWave. Our products are engineered for security and peace of mind. Each product has multiple safety redundancies built into the design and engineering to ensure that they are safer than most other similar products.
- **Quality** – To offer innovative design and advanced technology to ensure the best performance at the best price.
- **Value** – To combine efficiency and durability to offer one of the fastest ROIs in the industry.
- **Environmental Awareness** – NuWave LLC lives by the “green” philosophy. Materials are carefully selected to ensure that each product is safe for the environment. We believe in producing environmentally conscious, chemical-free products that are both efficient and affordable.

### Our History

NuWave LLC is the proud maker of ALSET LED Lighting. Its predecessor, IBC-Hearthware, was founded in 1993 and ever since has been a leader in innovative components, supplying components as OEM household appliance manufacturers. We specialize in developing new products for large corporations such as Mabe, Electrolux, General Electric, Daewoo, and Whirlpool. With this background, combined with strong technicians and advanced product-testing machinery, we have created a strong Quality Control and product management system. In 2012, we began to implement this knowledge into producing innovative LED luminaires and lamps.

For 27 years, we have focused our goals around delivering high-quality products to satisfied customers. Our 400,000-square-foot warehouse and distribution center, located next to our company headquarters in Libertyville, IL, holds our stocked items for purchases and quick deliveries. We pride ourselves on same-day processing on standard orders.

### Our Promise

NuWave's goal to our customers is to maintain top-notch customer satisfaction. That is why we developed an online customer portal on our website, which allows partners to track order status, inventory levels, and new product information. We also generate lighting layouts with a two-day turnaround time so the customer may see how well the fixture performs for their applications. Our warranty is backed by a company with over \$10MM in annual sales, so in the unlikely event of a problem you know we will stand behind the product.

### Our Future

NuWave has a world-class research and development team that is focused on developing innovative solutions in LED lighting. With our passion and devotion to advancements in LED lighting, our team has earned the respect of lighting distributors, architects, designers, engineers, and related professionals worldwide while developing innovative products that will help revolutionize the way we light our world.

# LED Strips/Wraps

TC = Tandem with cords or conduit TS = Tandem with Seamless Connector (end to end)



Reference: 61227

## TPAL -TS- Linkable



Model #	Ref#	Lumens	LmW	Color Temp (°K)	Watt	Input Voltage
TPAL24-2L-40K-UL-DM-TS	61244	2330	116	4000	20	120-277 V
TPAL48-4L-35K-UL-TS	61511	4308	119	3500	36	120-277 V
TPAL48-4L-40K-UL-TS	61226	4380	121	4000	36	120-277 V
TPAL48-4L-40K-UL-DM-TS	61246	4390	121	4000	36	120-277 V
TPAL48-4L-50K-UL-TS	61140	4524	125	5000	36	120-277 V
TPAL48-5L-35K-UL-TS	61541	5214	115	3500	45	120-277 V
TPAL48-5L-35K-UL-OC-TS	61543	5214	115	3500	45	120-277 V
TPAL48-5L-35K-UL-EM-TS	61544	4989	117	3500	43	120-277 V
TPAL48-5L-35K-UL-DM-TS	61542	5214	115	3500	45	120-277 V
TPAL48-5L-40K-UL-TS	61227	4989	127	4000	43	120-277 V
TPAL48-5L-40K-UL-TS	61228	5476	122	5000	45	120-277 V
TPAL96-8L-35K-UL-TS	61519	8677	128	3500	68	120-277 V
TPAL96-8L-40K-UL-TS	61253	8766	129	4000	68	120-277 V
TPAL96-8L-40K-UL-DM-TS	61254	8766	129	4000	68	120-277 V
TPAL96-8L-50K-UL-TS	61269	8944	130	5000	69	120-277 V

Ex. (TPAL24) 2' Strip – (2L) 2000 Lumens – (40K) 4,000 Kelvin – (UL) Universal Voltage 120-277V

- 4000K/5000K Stocked • Occupancy Sensor Available • Dimming Available \*Emergency Backup Available
- Can link up to 400W on 120V and 1000W on 277V • Fixture Includes Connectors and Hanging Brackets

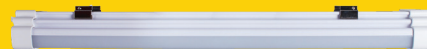
## TPAL -TC – Conduit/cord connected



Model #	Ref#	Lumens	LmW	Color Temp (°K)	Watt	Input Voltage
TPAL24-2L-40K-UL-TC	61275	2330	119	4000	20	120-277 V
TPAL24-2L-40K-UL-OC-TC	61277	2330	119	4000	20	120-277 V
TPAL24-2L-40K-UL-OC-ST-TC	61628	2330	119	4000	20	120-277 V
TPAL24-2L-50K-UL-TC	61293	2407	124	5000	20	120-277 V
TPAL24-2L-50K-UL-OC-TC	61295	2407	124	5000	20	120-277 V
TPAL24-2L-50K-UL-OC-ST-TC	61631	2407	124	5000	20	120-277 V
TPAL48-4L-35K-UL-TC	61510	4308	119	3500	36	120-277 V
TPAL48-4L-40K-UL-TC	61278	4380	121	4000	36	120-277 V

(Continued on next Page)

# LED Strips/Wraps



TC = Tandem with cords or conduit TS = Tandem with Seamless Connector (end to end)

Reference: 61296

Model #	Ref#	Lumens	LmW	Color Temp (°K)	Watt	Input Voltage
TPAL48-4L-40K-UL-OC-TC	61280	4380	121	4000	36	120-277 V
TPAL48-4L-50K-UL-TC	61296	4524	125	5000	36	120-277 V
TPAL48-4L-50K-UL-OC-TC	61298	4524	126	5000	36	120-277 V
TPAL48-5L-40K-UL-TC	61281	5301	117	4000	45	120-277 V
TPAL48-5L-40K-UL-EM-TC	61284	5301	117	4000	45	120-277 V
TPAL48-5L-40K-UL-OC-TC	61283	5301	117	4000	45	120-277 V
TPAL48-5L-40K-UL-OC-EM-ST-TC	61629	4989	117	4000	43	120-277 V
TPAL48-5L-50K-UL-TC	61299	5475	122	5000	45	120-277 V
TPAL48-5L-50K-UL-DM-TC	61300	5479	121	5000	45	120-277 V
TPAL48-5L-50K-UL-EM-TC	61302	5308	121	5000	44	120-277 V
TPAL48-5L-50K-UL-OC-EM-ST-TC	60632	5476	122	5000	45	120-277 V
TPAL96-8L-40K-UL-EM-TC	61290	7895	115	4000	69	120-277 V
TPAL96-8L-40K-UL-OC-EM-ST-TC	61630	7895	115	4000	69	120-277 V
TPAL96-8L-40K-UL-OC-TC	61289	7895	115	4000	69	120-277 V
TPAL96-8L-40K-UL-TC	61287	8766	129	4000	67	120-277 V
TPAL96-8L-50K-UL-EM-TC	61308	8399	119	5000	71	120-277 V
TPAL96-8L-50K-UL-OC-EM-ST-TC	61633	8944	119	5000	69	120-277 V
TPAL96-8L-50K-UL-OC-TC	61307	8399	119	5000	71	120-277 V
TPAL96-8L-50K-UL-TC	61305	8399	119	5000	71	120-277 V
*RMSTOC- Occupancy sensor remote	61696					
*RMSTEM- Emergency remote	61324					

## Features

- Replace outdated, inefficient strip lighting with low-wattage, high-lumen solutions
- Compact size with flexible mounting: wall, ceiling, and suspended
- Available 2', 4', and 8' lengths
- Workable voltage: 90-305V
- Full range of options: occupancy sensor, emergency backup, tandem wiring, and dimming
- Frosted acrylic lens included
- IP65 rated with PG9 connector included (TC model)
- No loss in lumen output in cold environments
- Compatible with 0-10V analog dimming system
- 5-year warranty
- CRI >80
- Chain hanging assembly and mounting kit included
- Available in the following color temperatures: 3000K, 3500K, (4000K, 5000K Stocked)

# LED Strips/Wraps

TC = Tandem with cords or conduit TS = Tandem with Seamless Connector (end to end)



Reference: 61296



Model	L(inches)		L2 (Inches)	W (Inches)	H (Inches)
	TS	TC	TS / TC	TS / TC	TS / TC
TPAL24	23.6	25.6	21.3	3.7	2.4
TPAL48	47.2	49.2	44.9	3.7	2.4
TPAL96	94.5	96.5	92.1	3.7	2.4

Options	Applications
<ul style="list-style-type: none"> <li>Emergency battery backup (remote required)</li> <li>Occupancy sensor</li> <li>0-10V Dimming</li> <li>6' Cord</li> <li>Stairwell Model (ST) dims does not turn off</li> <li>Factory preset settings</li> </ul>	<ul style="list-style-type: none"> <li>Retail stores</li> <li>Industrial</li> <li>Warehouses</li> <li>Residential</li> <li>Vanity Lighting</li> <li>Shelving</li> <li>Under cabinets</li> </ul>

## Strip Light Series Stairwell

(Dimming option does not turn off)

Model #	Ref#	Lumens	LmW	Color Temp(°K)	Watt	Input Voltage
TPAL24-2L-40K-UL-OC-ST-TC	61628	2330	119	4000	20	120-277 V
TPAL24-2L-50K-UL-OC-ST-TC	61631	2407	124	5000	20	120-277 V
TPAL48-5L-40K-UL-OC-EM-ST-TC	61629	4989	117	4000	43	120-277 V
TPAL48-5L-50K-UL-OC-EM-ST-TC	60632	5476	122	5000	45	120-277 V
TPAL96-8L-40K-UL-OC-EM-ST-TC	61630	7895	115	4000	69	120-277 V
TPAL96-8L-50K-UL-OC-EM-ST-TC	61633	8944	119	5000	69	120-277 V
RMSTEM Remote (1per site)	61324					

Features		
<ul style="list-style-type: none"> <li>Wide Beam Angle</li> <li>Built-in aluminum heat sink with 94 V0 Fire-rated PC housing</li> <li>IP65: Integral design and fully compact structure</li> <li>No glass</li> <li>End knock out permits conduit connection or can be cord-connected. Alternate power connection through back also available.</li> <li>Mounting/hanging kit included for wall ceiling or suspended mount</li> <li>Emergency backup, occupancy sensor, 0-10 V Dimming</li> </ul>	<ul style="list-style-type: none"> <li>Sensor hold time 5 minutes, then dims to 20% (does not turn off)</li> <li>Input Voltage: 120 - 277V</li> <li>Power: 25W - 70W</li> <li>Frequency: 50 / 60 Hz</li> <li>Lumen Efficacy: 120 lumens per watt</li> <li>Operating Temperature: -25°C to +40°C</li> <li>Power Factor: &gt;0.9</li> <li>Beam Angle: 270°</li> <li>THD: &lt;18%</li> <li>Lifespan: 50,000 hours</li> <li>DLC Standard</li> <li>5-year warranty</li> <li>Color temperature: 40K - 50K in stock</li> </ul>	<ul style="list-style-type: none"> <li>OC: Occupancy sensor</li> <li>EM: Emergency backup, meets UL924 (EM remote, #61324, required for testing, one per location. Emergency operating temperature -13°F to +104°F)</li> <li>Output in EM Mode:                     <ul style="list-style-type: none"> <li>TPAL-5L: 6 Watt, 744 Lumens</li> <li>TPAL-8L: 6 Watt, 760 Lumens</li> </ul> </li> </ul>

# Strip Light Series - CCT Selectable



Reference: 61758

**One fixture can change color temperature with the switch of a button.  
Remote required. 7 color options.**

TS					
TS	Model #	Ref#	Lumens	Watt	
24" Strip TS	TPAL24-2L-XXK-UL-DM-CT-TS	61758	4181	20	
48" Strip TS	TPAL48-4L-XXK-UL-DM-CT-TS	61760	4680	36	
48" Strip TS	TPAL48-5L-XXK-UL-DM-CT-TS	61762	5850	45	
96" Strip TS	TPAL96-8L-XXK-UL-DM-CT-TS	61764	9100	70	
TS Cord	TS Cord with special end	61331			
TC					
24" Strip TC	TPAL24-2L-XXK-UL-DM-CT-TC	61759	2600	20	
48" Strip TC	TPAL48-4L-XXK-UL-DM-CT-TC	61761	4680	36	
48" Strip TC	TPAL48-5L-XXK-UL-DM-CT-TC	61763	5850	45	
96" Strip TC	TPAL96-8L-XXK-UL-DM-CT-TC	61657	9100	70	
TS Cord	TS Cord w/NEMA 1-15 plug (120v)	61311			
REMOTE					
REMOTE	RMCCT	61766			

CT= CCT Selectable - TS= Tandem Seamless - TC= Tandem Cord/Conduit

Features	Applications
<ul style="list-style-type: none"> <li>• CT = CCT Selectable : 3000K, 3500K, 400K=0K, 4500K, 5000K, 6000K, and 6500K</li> <li>• Remote Required (61766)</li> </ul>	<ul style="list-style-type: none"> <li>• Healthcare facilities</li> <li>• Hospitality</li> <li>• Schools</li> </ul>

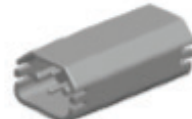
## Included with each fixture:



Hanging Kits



PG9 Connector



Connector for seamless connection



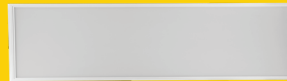
Mounting Bracket



**Remote - Required to change CCT - #61766  
not included with fixture**

# Flat Panel

Reference: 60739



Model #	Ref#	Lumens	LmW	Color Temp(°K)	Watt	Input Voltage
FPT22-4L-40K-UL-DM-B	60862	3946	105	4000	38	120-277 V
FPT22-4L-50K-UL-DM-B	60737	4070	109	5000	38	120-277 V
FPT22-5L-50K-UL-DM-B	60738	5409	115	5000	47	120-277 V
FPT24-5L-40K-UL-DM-B	60863	5533	115	4000	48	120-277 V
FPT24-5L-40K-UL-DM-B-EM	60861	5533	115	4000	48	120-277 V
FPT24-5L-50K-UL-DM-B	60739	5843	120	5000	48	120-277 V
FPT24-6L-50K-UL	60740	6786	114	5000	59	120-277 V
CF-22 Frame Kit	61655					
CF-24 Frame Kit	61657					

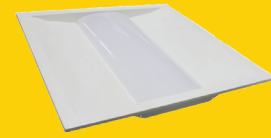
FPT14 - 1' x 4' • FPT22 - 2' x 2' • FPT24 - 2' x 4' • Ex. (FPT24) 2' x 4' Troffer - (4L) 4,000 Lumens - (50K) 5,000 Kelvin - (UL) Universal Voltage 120-277V

Features	Applications
<ul style="list-style-type: none"> <li>• L70 &gt;50,000 hours</li> <li>• Power factor: ≥0.9</li> <li>• Instant on to full brightness</li> <li>• CRI &gt;80</li> <li>• 0-10V DC dimming standard</li> <li>• LM 79/80 and TM-21 reports available</li> </ul>	<ul style="list-style-type: none"> <li>• Retail stores</li> <li>• Healthcare facilities</li> <li>• Offices</li> <li>• Workshops</li> <li>• Indoor area lighting</li> <li>• Schools</li> </ul>



# Architectural Troffer

Reference: 60732



Model #	Ref#	Lumens	LmW	Color Temp(°K)	Watt	Input Voltage
TRK22-4L-40K-UL	61350	4272	138	4000	31	120-277 V
TRK22-4L-50K-UL	60731	4316	141	5000	31	120-277 V
TRK22-5L-40K-UL	61351	5145	134	4000	39	120-277 V
TRK22-5L-50K-UL	60732	5450	144	5000	38	120-277 V
TRK24-5L-40K-UL	61352	5482	142	4000	39	120-277 V
TRK24-5L-50K-UL	60733	5526	144	5000	39	120-277 V
TRK24-7L-40K-UL	61353	6549	140	4000	47	120-277 V
TRK24-7L-50K-UL	60734	6942	148	5000	47	120-277 V

• TRK22 - 2' x 2' • TRK24 - 2' x 4'  
 Ex. (TRK24) 2' x 4' Troffer - (7L) 7,000 Lumens - (40K) 4,000 Kelvin - (UL) Universal Voltage 120-277V

Features	Applications
<ul style="list-style-type: none"> <li>• L70 &gt;60,000 hours</li> <li>• Frosted diffuser to reduce glare</li> <li>• Power factor: ≥0.99</li> <li>• Instant on to full brightness</li> <li>• CRI &gt;80</li> <li>• 0-10V DC dimming standard</li> <li>• LM 79/80 and TM-21 reports available</li> </ul>	<ul style="list-style-type: none"> <li>• Operating temp: -40°C to +60°C / -40°F to +140°F</li> <li>• Input voltage: 120-277V</li> <li>• Workable voltage: 90-305V</li> <li>• ETL, DLC Premium, RoHS, and FCC certified</li> <li>• Rated for damp locations</li> <li>• Lightweight for easy installation</li> <li>• 5-year warranty</li> </ul>
	<ul style="list-style-type: none"> <li>• Retail stores</li> <li>• Healthcare facilities</li> <li>• Offices</li> <li>• Workshops</li> <li>• Indoor area lighting</li> <li>• Schools</li> </ul>

# CLAW Retrofit Solution

Reference: 60761



Model #	Ref#	Lumens	LmW	Color Temp(°K)	Watt	Input Voltage
STRK14-4L-40K-UL	60759	3300	0	4000	25	120-277 V
STRK14-4L-50K-UL	60869	3300	0	5000	25	120-277 V
STRK22-4L-40K-UL	60761	4272	138	4000	31	120-277 V
STRK22-4L-50K-UL	60871	3935	131	5000	30	120-277 V
STRK22-5L-40K-UL	60762	4827	134	4000	36	120-277 V
STRK22-5L-50K-UL	60872	5557	138	5000	40	120-277 V
STRK24-5L-40K-UL	60763	5557	138	4000	40	120-277 V
STRK24-5L-50K-UL	60873	5629	140	5000	40	120-277 V
STRK24-6L-50K-UL	60874	6674	148	5000	45	120-277 V

• STRK22 - 2' x 2' • STRK24 - 2' x 4' • Ex. (STRK24) 2' x 4' Troffer - (6L) 6,000 Lumens - (40K) 4000 Kelvin - (UL) Universal Voltage 120-277V

Features	Applications
<ul style="list-style-type: none"> <li>• L70 &gt;60,000 hours</li> <li>• Uses magnets to allow flexibility during installation</li> <li>• Driver will operate 1, 2, or 3 strips</li> </ul>	<ul style="list-style-type: none"> <li>• Operating temp: -40°C to +60°C / -40°F to +140°F</li> <li>• 5-year warranty</li> <li>• Workable voltage: 90-305V or 180-528V</li> </ul>
	<ul style="list-style-type: none"> <li>• Offices</li> <li>• Retail stores</li> <li>• Signage</li> </ul>



# NEW - LED Paddle Retrofit Lamp



Alset LED Paddle Retrofit lamps are the ideal upgrade solution to traditional HID lamp technologies. These lamps are a simple energy saving solution for providing significant maintenance savings. The integrated driver design is an ideal upgrade from traditional technologies. Installation is very simple by bypassing existing ballast.

## Features:

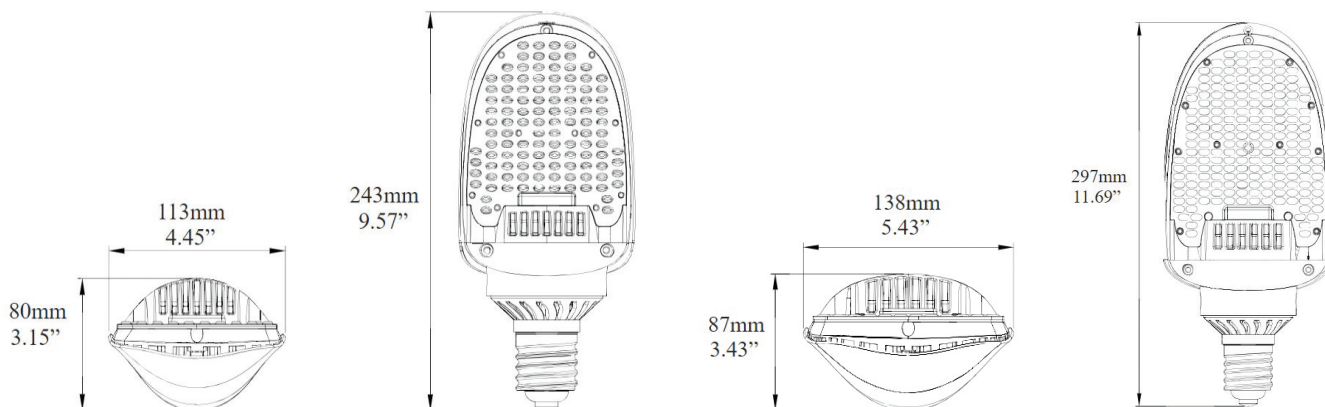
- Energy saving replacement for MH or HPS
- Up to 5 times longer life and 80% energy savings compared to HID
- 5 year warranty
- Horizontal burn position
- Type 5 distribution
- 50,000 hour rated life
- Lamp base rotates up to 270° to allow for proper aiming for the lamp
- The use of an external surge protection device is recommended
- Operating temperature range between -4°F and 113°F (-20°C and 45°C). Suitable for use in dry and damp environments. Do not use where exposed to water or outdoors without an appropriate enclosed fixture

## Applications:

- Area lighting
- Flood Lighting

54W LED Retrofit Lamp		115W LED Retrofit Lamp	
Input Power (W)	54	Input Power (W)	115
Reference # 62131	4000K	Reference # 62133	4000K
Reference # 62132	5000K	Reference # 62134	5000K
Bare Lamp Lumens	6500	Bare Lamp Lumens	13500
DLC Rated Lumens	5140	DLC Rated Lumens	10860
Lumens/Watt (Bare Lamp)	120	Lumens/Watt (Bare Lamp)	117
Orientation	Horizontal	Orientation	Horizontal
Color Rendering Index (CRI)	70	Color Rendering Index (CRI)	70
Life Hours	50000	Life Hours	50000
Distribution	Type V	Distribution	Type V
Dimming	No	Dimming	No
Operating Temperature Range	-4°F and 113°F (-20°C and 45°C)	Operating Temperature Range	-4°F and 113°F (-20°C and 45°C)

Model #	Ref #	Lumens	Color Temp (K)	Watts	Lm/W	Wattage Equivalent
PAD-54W-40K-UL	62131	5,010	4000K	53.01	94.51	250W HID
PAD-115W-40K-UL	62133	10,642	4000K	113.6	93.68	400W HID
PAD-54W-50K-UL	62132	5,142	5000K	53.43	96.24	250W HID
PAD-115W-50K-UL	62133	10,642	5000K	113.6	93.68	400W HID



# Downlight Retrofit

## Retrofit Solution



Reference: 51612 (4"-6")



Reference: 51616 (8")

Model #	Ref#	Lumens	LmW	Color Temp (°K)	Watt	Input Voltage
RF4-6L-27K-ST	51504	609	103	2700	6	120 V
RF4-6L-35K-ST	51505	627	108	3500	6	120 V
RF6-6L-27K-ST	51612	610	104	2700	6	120 V
RF6-6L-35K-ST	51613	654	112	3500	6	120 V
RF6-10L-27K-ST	51614	1002	106	2700	9	120 V
RF6-10L-35K-ST	51615	1047	111	3500	9	120 V
RF6-14L-27K-ST	51616	1407	108	2700	13	120 V
RF6-14L-35K-ST	51617	1463	113	3500	13	120 V
RF8-22L-30K-UL	51675	2284	104	3000	21	120-277 V
RF8-22L-35K-UL	61327	2292	106	3500	22	120-277 V
RF8-22L-40K-UL	51676	2326	111	4000	21	120-277 V
RF8-30L-30K-UL	51677	3233	115	3000	29	120-277 V
RF8-30L-40K-UL	51678	3288	113	4000	29	120-277 V
RF8-40L-30K-UL	51679	4627	113	3000	38	120-277 V
RF8-40L-40K-UL	51680	4712	112	4000	38	120-277 V
RF10-22L-30K-UL	51681	2284	109	3000	21	120-277 V
RF10-22L-40K-UL	51682	2326	111	4000	21	120-277 V
RF10-30L-30K-UL	51683	3233	113	3000	29	120-277 V
RF10-30L-40K-UL	51684	3288	115	4000	29	120-277 V
RF10-40L-30K-UL	51685	4627	121	3000	38	120-277 V
RF10-40L-40K-UL	51686	4712	124	4000	38	120-277 V

\*Ballast must be removed to allow direct 100-277V connection

Ex. (RF6) 6" - (14L) 1,400 Lumens - (27K) 2,700 Kelvin - (ST) Standard Voltage 120V or (UL) Universal Voltage 120-277V

### Features

- L70 >60,000 hours
- Power factor: ≥0.95
- Instant on to full brightness
- CRI >80
- TRIAC dimming standard (4" and 6")
- 0-10V DC dimming standard (Only 8"/10")
- LM 79/80 and TM-21 reports available
- Input voltage: 120V (Only for 4" and 6" retrofits)
- Input voltage: 120-277V (Only for 8"/10" retrofits)
- Operating temp: -40°C to +45°C / -40°F to +113°F

- Dimensions (6"): 7.56" x 2.42" (3.43 aperture)
- Dimensions (8" & 10"): 11.2" x 4.92"
- UL, Energy Star, RoHS, and FCC certified
- Rated for damp locations (4", 6")
- Rated for wet locations (8" - 10")
- Superior heat management
- See compatible dimmer list at [www.alsetled.com](http://www.alsetled.com)
- Includes E26 adapter (only for 4" and 6" retrofits)
- 8" and 10" models may be used in new construction
- 7-year warranty
- Dimensions (4"): 5.20" x 2.17" (4.80 aperture)

### Applications

- Church ceilings
- Lobbies
- Atriums
- Kitchens
- Bathrooms
- Basements
- Other damp locations

# Lowbays/Highbays



Reference: 61685

Model #	Ref#	Lumens	LmW	Color Temp (°K)	Watt	HID Equivalent
LB-8L-35K-UL	60532	9490	130	3500	73	175 W
LB-8L-30K-UL	60531	9366	128	3000	73	175 W
LB-8L-40K-UL	52075	9282	125	4000	74	175 W
LB-8L-50K-MW	61780	10488	128	5000	76	175 W
LB-11L-30K-UL	60534	12615	126	3000	100	250 W
LB-11L-40K-MW	52077	12787	127	4000	100	250 W
LB-11L-50K-MW	61784	12959	130	5000	100	250 W
HB-18L-30K-UL	61785	16801	123	3000	136	400 W
HB-18L-30K-UL-MW	61683	17575	130	3000	135	400 W
HB-18L-50K-UL-MW	61685	18256	135	5000	135	400 W
HB-18L-50K-UH	52311	18120	124	5000	146	400 W
HBS-18L-40K-UL	61111	16525	121	4000	137	400 W
HBS-18L-50K-UL	60474	16834	123	5000	137	400 W
HBS-24L-40K-UL	61131	27421	140	4000	195	1000 W
HBS-24L-50K-UL	61132	27860	142	5000	194	1000 W
HBS-24L-40K-UH	61332	27437	152	4000	180	1000 W
HBS-24L-50K-UH	61333	28201	156	5000	180	1000 W
HB-28L-30K-UL-MW	61686	29199	132	3000	222	1000 W
HB-28L-40K-UH	52410	28676	124	4000	232	1000 W
HB-28L-40K-UL	52050	28333	122	4000	232	1000 W
HB-28L-40K-UL-MW	61687	29703	134	4000	222	1000 W
HB-28L-50K-UH	52411	28676	124	5000	232	1000 W
HB-28L-50K-UL-MW	61688	29955	135	5000	222	1000 W
HBS-28L-35K-UL	61115	27212	125	3500	217	1000 W

LB - Lowbay HB - Highbay  
 Ex. (LB) Lowbay - (8L) 8,000 Lumens - (40K) 4,000 Kelvin - (UL) Universal Voltage 120-277V (UH) 347-480V

## Features

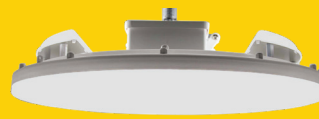
- L70 >60,000 hours
- Polycarbonate frosted lens for superior durability and low glare
- Power factor: ≥0.99
- Instant on to full brightness
- Wide light distribution
- CRI >80
- 0-10V DC dimming standard
- Input voltage: 120-277V (UL) or 347-480V (UH)
- 2kv surge protection included in driver

- Workable voltage: 90-305V or 180-528V
- Operating temp: -40°C to +60°C / -40°F to +140°F
- Dimensions: 21.6" x 21.6" x 5.2"
- UL, DLC, RoHS, NSF, and FCC certified
- NSF certified
- Lightweight for easy installation
- 7-year warranty
- DLC Premium listed except HBS-18 and HBS- 28L

## Applications

- Warehouses
- Retail stores
- Convention centers
- Manufacturing plants
- Parking garages
- Healthcare facilities
- Food-processing facilities

# Low/Highbays Up/Down



Reference: 61061

Model #	Ref#	Lumens	LmW	Color Temp (°K)	Watt	HID Equivalent
LBP-11L-40K-UL	61061	13000	130	4000	100	250 W
LBP-11L-50K-UL	61062	11000	110	5000	100	250 W
LBPS-11L-40K-UL	61088	12145	116	4000	104	250 W
LBPS-11L-50K-UL	61089	12323	118	5000	104	250 W
HBP-18L-40K-UL	61063	18000	130	4000	138	400 W
HBP-18L-50K-UL	61064	18000	110	5000	164	400 W
HBPS-18L-40K-UL	61090	15147	110	4000	138	400 W
HBPS-18L-50K-UL	61091	15418	112	5000	138	400 W
HBP-24L-40K-UL	61065	26878	110	4000	220	750 W
HBP-24L-50K-UL	61066	24000	110	5000	218	750 W
HBPS-24L-40K-UL	61092	23316	112	4000	207	750 W
HBPS-24L-50K-UL	61093	23670	114	5000	207	750 W

Ex. (HBP) Highbay - (18L) 18,000 Lumens - (50K) 5,000 Kelvin - (UL) Universal Voltage 120-277V

## Features

- L70 >60,000 hours
- Frosted polycarbonate lens
- Power factor: ≥0.99
- 14% Up-light illuminates ceiling and shelving
- Instant on to full brightness
- 7-year warranty

## Applications

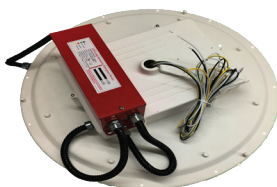
- Workable voltage: 90-305V or 180-528V
- Operating temp: -40°C to +60°C / -40°F to +140°F
- Dimensions: 21.6" x 21.6" x 5.2"
- UL, DLC, RoHS, and FCC certified
- 2kv surge protector included in driver

- Retail stores
- Malls

## Options

- OC Sensor
- Cord
- Cable Suspension

# Highbays Accessories



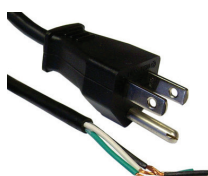
Battery Backup



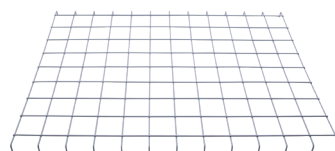
Hook



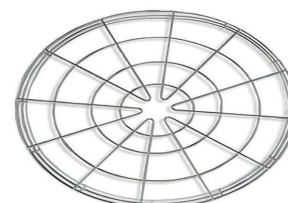
Occupancy Sensor w/ Cable Suspension



Cord and Plug



Wireguard Linear Highbay



Wireguard Round Highbay



# Linear Highbay - Integrated (HBLI) Gen III



## Product Features:

- Integral Sensor and EM available
- Wide distribution (Up to 115 degree spread)
- High efficiency (146-155) lumens per watt
- Chain hanger included. Other mounting types available
- Available in 4000K or 5000K color temperature
- CRI over 80
- Dry or Damp Rated
- Operating Temperature: -4 F to 122 F
- 0-10V DC dimming
- DLC Premium 4.0 listed (except 480V)
- Flicker Free
- Power Factor >0.9
- Input Voltage 120-277V (480V also available)
- 5 year warranty
- UL, RohS and FCC certified
- Optional frosted lens available

Reference #	Model #	Lumens	Watts	Lm/W	CCT
61788	HBLI-7L-40K-UL	6884	52	132	4000
61792	HBLI-7L-40K-UL-OC	6884	52	132	4000
61789	HBLI-7L-50K-UL	6987	52	132	5000
61793	HBLI-7L-50K-UL-OC	6987	52	132	5000
61804	HBLI-14L-40K-UL	15054	108	139	4000
61812	HBLI-14L-40K-UL-OC	15054	108	139	4000
61816	HBLI-14L-40K-UL-EM	15054	108	139	4000
61820	HBLI-14L-40K-UL-OC-EM	15054	108	139	4000
61805	HBLI-14L-50K-UL	15200	109	140	5000
61813	HBLI-14L-50K-UL-OC	15200	109	140	5000
61817	HBLI-14L-50K-UL-EM	15200	109	140	5000
61821	HBLI-14L-50K-UL-OC-EM	15200	109	140	5000
61824	HBLI-21L-40K-UL	22493	164	137	4000
61832	HBLI-21L-40K-UL-OC	22493	164	137	4000
61836	HBLI-21L-40K-UL-EM	22493	164	137	4000
61840	HBLI-21L-40K-UL-OC-EM	22493	164	137	4000
61828	HBLI-21L-40K-UH-F	20303	163	137	4000
61825	HBLI-21L-50K-UL	22582	164	137	5000
61833	HBLI-21L-50K-UL-OC	22582	164	137	5000
61837	HBLI-21L-50K-UL-EM	22582	164	137	5000
61841	HBLI-21L-50K-UL-OC-EM	22582	164	137	5000
61829	HBLI-21L-50K-UH-F	20384	163	125	5000
61848	HBLI-29L-40K-UH-F	26339	219	120	4000
61845	HBLI-29L-50K-UL	30407	224	136	5000
61853	HBLI-29L-50K-UL-OC	30407	224	136	5000
61857	HBLI-29L-50K-UL-EM	30407	224	136	5000
61849	HBLI-29L-50K-UH-F	26656	219	122	5000
61865	HBLI-39L-50K-UL	40460	294	137	5000
61873	HBLI-39L-50K-UL-OC	40460	294	137	5000
61877	HBLI-39L-50K-UL-EM	40460	294	137	5000
61881	HBLI-39L-50K-UL-OC-EM	40460	294	139	5000

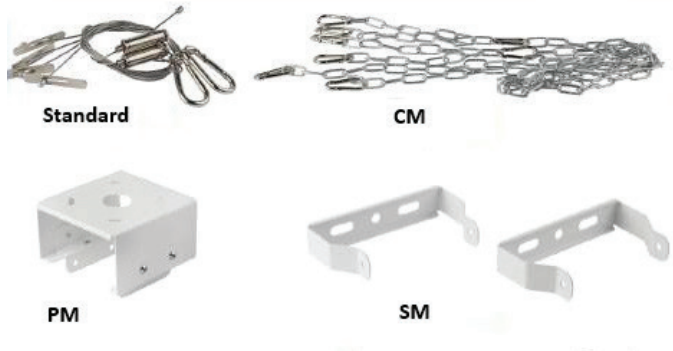
OC = Occupancy Sensor EM = Emergency Back-up F = Frosted Lens  
 120 - 277V (UL) 347- 480V (UH)

# Linear Highbay - Integrated (HBLI) Gen III

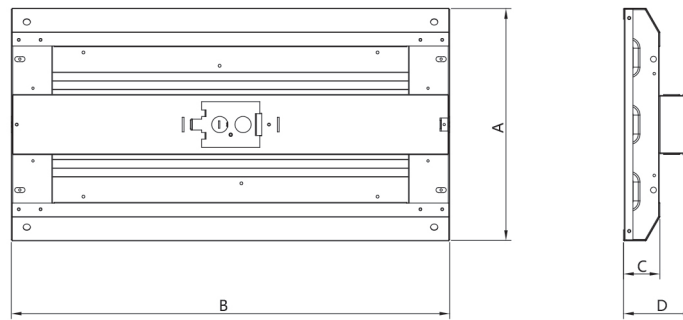
## Options

62043	LS (HBLI-7L)	Frosted Lens
62044	LS 2 (HBLI-14L, 21L)	Frosted Lens
62045	LS 3 (HBLI-29L, 39L)	Frosted Lens
62039	CM	Chain Mount
62040	SM	Ceiling Mount
62041	PM 1 (HBLI-7L and 14L)	Stem Mount
62042	PM 2 (HBLI-21L, 29L, and 39L)	Stem Mount
62046	WGL 1 (HBLI-7L)	Wire Guard
62047	WGL 2 (HBLI-14L, 21L)	Wire Guard
62048	WGL 3 (HBLI-29L, 39L)	Wire Guard

Occupancy and EM options available, see Model # on Page 13



## Dimensions:



Model #	Lumens	Watts	Lm/W	CCT	A width	B length	C height	D height with Ceiling/Stem option
HBLI-7L-xxK-UL	6884	52	132	4000	10.24"	11.81"	2.20"	3.94"
HBLI-14L-xxK-UL	15054	108	139	4000	10.24"	23.62"	2.20"	3.94"
HBLI-21L-xxK-UL	22493	164	137	4000	11.81"	23.62"	2.36"	4.09"
HBLI-29L-xxK-UH-F	26339	219	120	4000	11.81"	47.24"	2.36"	4.09"
HBLI-39L-xxK-UL	40460	294	137	5000	11.81"	47.24"	2.36"	4.09"

# Canopy Fixtures



Reference: 53000\*

Model #	Ref#	Lumens	LmW	Color Temp (°K)	Watt	Input Voltage
CP-11L-40K-UL	53000	11549	116	4000	99	120-277 V
CP-11L-50K-UL	53001	11649	117	5000	100	120-277 V

Ex. (CP) Canopy - (11L) 11,000 Lumens - (50K) 5,000 Kelvin - (UL) Universal Voltage 120-277V

## Features

- Surface mount fixture
- Superior heat management yields 60,000 hours life
- Lower maintenance costs
- Available 4000K and 5000K color temperatures
- L70 >60,000 hours
- Frosted lens to reduce glare
- Power factor:  $\geq 0.99$
- Instant on to full brightness
- 0-10V dimming standard
- Operating temp:  $-40^{\circ}\text{C}$  to  $+60^{\circ}\text{C}$  /  $-40^{\circ}\text{F}$  to  $+140^{\circ}\text{F}$
- Input voltage: 120-277V
- Workable voltage: 90-305V
- Driver dimensions: 10" x 6" x 2.25"
- UL, DLC, RoHS and FCC certification
- NSF Certified Splash zone/Non-food zone

- IP65 rated for wet locations
- LM 79/80 reports available
- Wide light distribution
- CRI >80
- 7-year warranty

## Applications

- Gas stations
- Warehouses
- Manufacturing plants
- Entryways and walkways
- Loading docks
- Parking garages
- Indoor/outdoor lighting

# Street Lights



Reference: 54054

Model #	Ref#	Lumens	LmW	Color Temp (°K)	Watt	Input Voltage
SLA-5L-40K-UL-PC-DM	54051	3665	116	4000	32	120-277 V
SLA-5L-50K-UH-NPC-ND	54221	3699	118	5000	31	347-480 V
SLA-8L-40K-UL-PC-DM	54052	7464	120	4000	62	120-277 V
SLA-8L-50K-UL-PC-DM	54105	7716	128	5000	60	120-277 V
SLA-8L-50K-UH-NPC-ND	54222	7729	128	5000	60	347-480 V
SLA-10L-40K-UL-PC-DM	54053	9563	123	4000	77	120-277 V
SLA-10L-50K-UL-PC-ND	54132	9886	132	5000	75	120-277 V
SLA-10L-50K-UL-PC-DM	54106	9886	132	5000	75	120-277 V
SLA-10L-50K-UL-PC-DM-DB	60348	9886	132	5000	75	120-277 V
SLA-10L-50K-UH-NPC-ND	54223	10137	132	5000	77	347-480 V
SLA-11L-40K-UL-PC-DM	54054	10942	121	4000	90	120-277 V
SLA-11L-50K-UL-PC-DM	54107	11418	127	5000	90	120-277 V
SLA-11L-50K-UL-PC-ND	54133	11418	127	5000	90	120-277 V
SLA-11L-50K-UL-PC-DM-DB	60354	11418	127	5000	90	120-277 V
SLA-11L-50K-UH-NPC-ND	54224	11430	127	5000	90	347-480 V
SLA-16L-30K-UL-NPC-ND	61455	14080	117	3000	120	120-277 V
SLA-16L-40K-UL-PC-DM	64055	14573	121	4000	120	120-277 V
SLA-16L-50K-UL-PC-DM	54108	15224	127	5000	120	120-277 V
SLA-16L-50K-UH-NPC-ND	54225	15224	127	5000	120	347-480 V
SLA-20L-50K-UH-NPC-ND	54225	18712	127	5000	147	347-480 V
SLA-27L-40K-UL-PC-DM	54056	26469	120	4000	220	120-277 V
SLA-27L-50K-UL-PC-DM	54109	27364	124	5000	220	120-277 V
SLA-27L-50K-UL-PC-ND	54135	27364	124	5000	220	120-277 V
SLA-27L-50K-UH-NPC-ND	54227	26530	124	5000	213	347-480 V
SLA-27L-50K-UL-PC-ND-DB	60350	27364	124	5000	220	120-277 V

Ex. (SLA) Street Light - (27L) 27,000 Lumens - (50K) 5,000 Kelvin - (T3) Type 3 - (UL) Universal Voltage 120-277 V - (UH) Voltage 347-480V- (SL) Silver - (PC) Photocell Option - (DM) Dimming - (ND) Non Dimming - (DB) Dark Bronze

Features	Applications
<ul style="list-style-type: none"> <li>• Polycarbonate-lensed optics provide superior light distribution</li> <li>• Power Factor: <math>\geq 0.99</math></li> <li>• Instant on to full brightness</li> <li>• CRI <math>&gt; 70</math></li> <li>• 0-10V dimming standard</li> <li>• LM 79/80 AND TM-21 reports available</li> <li>• Operating Temp: -40°F to +140°F / -40°C to +60°C (Rh 10-95%)</li> <li>• Input voltage: 120-277V or 347-480V</li> <li>• Workable voltage: 90-305V or 180-528V</li> <li>• Dimensions (HxWxL): 3.4" x 11.4" x 13.4-29.3"</li> <li>• Weight: 8-20 lbs</li> </ul>	<ul style="list-style-type: none"> <li>• Salt spray resistant</li> <li>• ETL, RoHS, and FCC certified</li> <li>• IP65 rated for wet locations</li> <li>• 10kV surge protection</li> <li>• Easy installation</li> <li>• Photocell option available</li> <li>• Easy-access panel</li> <li>• Sleek, modern design is both aesthetic and functional</li> <li>• Light gray color standard (other colors available)</li> <li>• 2 3/8" slipfitter standard, (consult ALSET LED for other mounting options)</li> <li>• 7-year limited warranty</li> </ul>
	<ul style="list-style-type: none"> <li>• Roadways</li> <li>• Industrial parks</li> <li>• Outdoor parking structures</li> <li>• Area and perimeter lighting</li> </ul>



# Flood Lights

Reference: 52203



Model #	Ref#	Lumens	LmW	Color Temp (°K)	Watt	Input Voltage
FL-3L-45K-A3-DB-UL	60298	3124	99	4500	32	120-277 V
FL-3L-50K-A3-UL-SL	52203	3124	99	5000	32	120-277 V
FL-5L-50K-A3-UL-SL	52204	4926	99	5000	50	120-277 V
FL-8L-50K-A3-UL-SL	52205	7834	98	5000	80	120-277 V
FL-10L-50K-A3-UL-SL	52206	9954	100	5000	100	120-277 V
FL-15L-50K-A3-UL-SL	52207	14476	104	5000	139	120-277 V
FL-22L-50K-A3-UL-SL	52208	21667	102	5000	213	120-277 V
FL-29L-50K-A3-UL-SL	52209	28666	102	5000	282	120-277 V
FL-29L-50K-UH	61326	28666	102	5000	281	347-480 V
FL-40L-50K-A3-UL-SL	52210	40630	100	5000	405	120-277 V
FL-60L-50K-A3-UL-SL	52211	59145	96	5000	614	120-277 V
FL-60L-40K-UH	61652	59128	96	4000	614	347-480 V
FLA-10L-50K-A3-UL-SL	52200	11102	124	5000	89	120-277 V
FLA-15L-50K-A3-UL-SL	52201	15914	128	5000	125	120-277 V
FLA-20L-50K-A3-UL-SL	52202	28123	128	5000	219	120-277 V

Ex. (FL) Flood - (60L) 60,000 Lumens - (50K) 5,000 Kelvin - (A3) Beam Angle - (UL) Universal Voltage 120-277V

## Features

- Polycarbonate lens and discrete LED optics provide superior light distribution
- Power factor:  $\geq 0.99$
- Instant on to full brightness
- 0-10V dimming standard
- LM 79/80 and TM-21 reports available
- Operating temp: -30°C to +50°C / -22°F to +122°F
- Input voltage: 120-277V (UL) or 347-480V (UH)
- Workable voltage: 90-305V or 180-528V
- ETL, DLC, RoHS, and FCC certified
- IP65 rated for wet locations
- 10kV surge protection
- Revolutionary heat sink design for superior heat management
- 5-year warranty

## Options

- Dimming capability
- Tenon mount
- Slipfitter mount
- Photocell with motion detection

## Applications

- Sports lighting
- Parking lots
- Landscape illumination
- Signage



Reference: 52209

# Gen 2 - Parking Lot/Wall Pack

Pole



Reference: 61427

Model #	Ref#	Lumens	LmW	Color Temp (°K)	Watt	Input Voltage
PLSN-8L-XXK-UL-Y-DB	**	8474	141	40K or 50K	80	120-277 V
PLSN-11L-XXK-UL-A-DB*	**	12412	138	40K or 50K	90	120-277 V
PLSN-11L-XXK-UL-D-DB*	**	12412	138	40K or 50K	89	120-277 V
PLSN-11L-XXK-UL-Y-DB	**	12412	138	40K or 50K	90	120-277 V
PLSN-19L-40K-UH-D-DB	61407	18786	130	40K	145	347-480 V
PLSN-19L-XXK-UH-Y-DB	**	18786	130	40K or 50K	145	347-480 V
PLSN-19L-XXK-UL-A-DB*	**	19355	130	40K or 50K	149	120-277 V
PLSN-19L-XXK-UL-D-DB*	**	19355	130	40K or 50K	149	120-277 V
PLSN-19L-XXK-UL-Y-DB	**	19355	130	40K or 50K	149	120-277 V
PLSN-25L-XXK-UL-A-DB	**	25202	137	40K or 50K	183	120-277 V
PLSN-25L-XXK-UL-D-DB	**	25202	137	40K or 50K	183	120-277 V
PLSN-25L-XXK-UL-Y-DB	**	25202	137	40K or 50K	183	120-277 V
PLSN-32L-XXK-UH-Y-DB	**	31295	128	40K or 50K	244	347-480 V
PLSN-32L-XXK-UL-Y-DB	**	31295	128	40K or 50K	244	120-277 V
PLSN-32L-40K-UH-D-DB	61524	31295	128	40K	244	347-480 V
PLSN-32L-40K-UL-D-DB	61427	31295	128	40K	244	120-277 V
PLSN-40L-40K-UL-D-DB	61617	39390	127	40K	308	120-277 V
PLSN-40L-40K-UL-Y-DB	61618	39390	127	40K	308	120-277 V
PLSN-40L-XXK-UH-A-DB	**	38717	132	40K or 50K	294	347-480 V
PLSN-40L-XXK-UH-D-DB	**	38717	132	40K or 50K	294	347-480 V
PLSN-40L-XXK-UH-Y-DB	**	38717	132	40K or 50K	294	347-480 V
PLSN-40L-XXK-UL-A-DB	**	39390	127	40K or 50K	308	120-277 V
AP-1 (Adapter for round pole for 25L, 32L, and 40L)	61662					

## NOTES:

- 1) XXK= 40K or 50K
- 2) \*= Dark Bronze or Black
- 3) \*\*= Contact ALSET for Reference number
- 4) PLSN-8L, 11L, and 19L in Direct Mounting configuration have both flat and round pole adapters included.

Ex. (PLSN) New Parking Lot - (25L) 25,000 Lumens - (50K) 5,000 Kelvin - Universal Voltage 120-277V (UL) - optional 347-480V(UH)  
 D = Direct Straight Mount Bracket - A = Adjustable Knuckle Mount Bracket - Y= Yoke Mount Bracket

## Features

- Dark Sky Compliant
- Power factor: 0.9
- Instant on to full brightness
- CRI >80
- LM 79/80 and TM-21 reports available
- 150\*85 degree lens angle
- Input voltage: 120-277V or 347-480V
- Workable voltage: 90-305V or 180-528V
- Type 3 distribution standard
- Type 2, 4, & 5 available

- UL, DLC, RoHS, and FCC certified
- IP65 rated for wet locations
- 7-year warranty
- Optional photocell and surge protection function
- Matches Wall Pack WPSN Series
- Standard color is Black - Dark bronze and silver available
- Must be ordered as either direct pole mount or adjustable 2 3/8" slipfitter knuckle

## Applications

- Roadways
- Parking lots
- Pathways

# Full Cutoff Wall Pack



Reference: 61705

Model #	Ref#	Lumens	Color Temp (°K)	Watt	Lumens per Watt	Input Voltage
WPFSN-7L-40K-UL	61697	7,347	4000K	61	120	150W
WPFSN-7L-40K-S-UL	61698	7,347	4000K	61	120	150W
WPFSN-7L-40K-P-UL	61699	7,347	4000K	61	120	150W
WPFSN-7L-40K-SP-UL	61700	7,347	4000K	61	120	150W
WPFSN-7L-50K-UL	61701	7,482	5000K	62	121	150W
WPFSN-7L-50K-S-UL	61702	7,482	5000K	62	121	150W
WPFSN-7L-50K-P-UL	61703	7,482	5000K	62	121	150W
WPFSN-7L-50K-SP-UL	61704	7,482	5000K	62	121	150W
WPFSN-15L-40K-UL	61705	14,667	4000K	120	122	320W
WPFSN-15L-40K-S-UL	61706	14,667	4000K	120	122	320W
WPFSN-15L-40K-P-UL	61707	14,667	4000K	120	122	320W
WPFSN-15L-40K-SP-UL	61708	14,667	4000K	120	122	320W
WPFSN-15L-50K-UL	61709	14,529	5000K	121	120	320W
WPFSN-15L-50K-S-UL	61710	14,529	5000K	121	120	320W
WPFSN-15L-50K-P-UL	61712	14,529	5000K	121	120	320W
WPFSN-15L-50K-SP-UL	61713	14,529	5000K	121	120	320W
WPFSN-19L-40K-UL	61714	18,624	4000K	149	125	400W
WPFSN-19L-40K-S-UL	61715	18,624	4000K	149	125	400W
WPFSN-19L-40K-P-UL	61716	18,624	4000K	149	125	400W
WPFSN-19L-40K-SP-UL	61717	18,624	4000K	149	125	400W
WPFSN-19L-50K-UL	61718	18,270	5000K	150	122	400W
WPFSN-19L-50K-S-UL	61719	18,270	5000K	150	122	400W
WPFSN-19L-50K-P-UL	61720	18,270	5000K	150	122	400W
WPFSN-19L-50K-SP-UL	61721	18,270	5000K	150	122	400W

**NOTE:** S=Surge Protector; P=Photocell; SP=Surge Protector and Photocell

Features	Applications
<ul style="list-style-type: none"> <li>• 2 Housing sizes</li> <li>• Lumen range 7,000 - 18,000</li> <li>• Zero light above 90°</li> <li>• RoHs Compliant</li> <li>• Continuous dimming to 10%</li> <li>• Optional surge protection</li> <li>• Optional photo control</li> <li>• Power Factor &gt;0.9</li> <li>• Operating temperature -20° - +45° C/ -4° - +113°F</li> <li>• 5-year warranty</li> <li>• LM79/L70 reports and TM21 data available</li> <li>• IP65 rated for wet locations</li> </ul>	<ul style="list-style-type: none"> <li>• Office buildings</li> <li>• Industrial facilities</li> <li>• Pathway lighting</li> <li>• Educational institutions</li> </ul>

# Gen 2 - Wall Pack

Same Housing as New Parking Lot

Reference: 61176



Model #	Ref#	Lumens	LmW	Color Temp (°K)	Watt	Input Voltage
WPSN-7L-40K-UL	60567	7320	119	4000	60	120-277 V
WPSN-7L-50K-UL	61173	7424	121	5000	62	120-277 V
WPSN-7L-57K-UL	61174	7498	122	5700	61	120-277 V
WPSN-9L-40K-UL	60568	10232	127	4000	80	120-277 V
WPSN-9L-50K-UL	61176	10380	129	5000	81	120-277 V
WPSN-9L-57K-UL	61177	10528	131	5700	80	120-277 V
WPSN-12L-40K-UL	60569	12251	122	4000	100	120-277 V
WPSN-12L-50K-UL	61179	12374	123	5000	100	120-277 V
WPSN-12L-57K-UL	61180	12496	124	5700	100	120-277 V
WPSN-13L-40K-UL	60570	14190	115	4000	123	120-277 V
WPSN-13L-50K-UL	61128	14332	116	5000	123	120-277 V
WPSN-13L-57K-UL	61183	14473	117	5700	123	120-277 V

Ex. (WPSN) New Wall Pack - (13L) 13,000 Lumens - (50K) 5,000 Kelvin - (UL) Universal Voltage 120-277V

## Features

- Instant on to full brightness
- IP65 rated
- 5-year warranty

- UL, DLC, RoHS and FCC certified
- Workable voltage: 120-277V

## Applications

- Sports venues
- Industrial settings
- Warehouses

# Mini Wall Pack

Reference: 61137



Model #	Ref#	Lumens	LmW	Color Temp (°K)	Watt	Input Voltage
WPSN-1L-50K-UL	61136	1200	92	5000	13	120-277 V
WPSN-2L-40K-UL	61137	1700	85	4000	20	120-277 V
WPSN-2L-50K-UL	61138	1700	85	5000	20	120-277 V

Ex. (WPSN) New Wall Pack - (1L) 1,000 Lumens - (50K) 5,000 Kelvin - (UL) Universal Voltage 120-277V

## Features

- Suitable for mounting 10' to 12'
- Power Factor: >0.8
- Instant on to full brightness
- CRI >80
- Photocell included
- LM 79/80 and TM-21 reports available
- Operating temp: -20°C to +45°C / -4°F to +115°F

- Rated for wet locations
- Dimensions: 10.66" x 5.90" x 2.60"
- 5-year warranty
- No DLC certification
- Black housing standard
- Input voltage: 120-277V
- Workable voltage: 90-305V

## Applications

- Entrance/Exit doors
- Warehouses



# Gen 3 - Wall Packs

Reference: 53507



Model #	Ref#	Lumens	Color Temp (°K)	Watt	Lumens per Watt	Wattage Equivalent
WPHSN-5L-40K-UL	61722	4,744	4000K	40	119	70W HID
WPHSN-5L-50K-UL	61726	4,807	5000K	40	120	70W HID
WPHSN-10L-40K-UL	61738	9,666	4000K	82	118	150W HID
WPHSN-10L-50K-UL	61742	9,825	5000K	82	120	150W HID
WPHSN-12L-40K-UL	61746	12,165	4000K	99	123	250W HID
WPHSN-12L-50K-UL	61750	12,407	5000K	99	123	250W HID

## Features

- Forward throw and downlight design for maximum light coverage
- Polycarbonate double-sided Fresnel lens for superior light distribution
- Power Factor >0.9
- Operating temperature -20° - +50° C / -4° - +122°F
- Housing color is Dark Brown
- 5 Year Warranty
- CRI > 80
- Input Voltage 120-277V
- Lumen Efficacy - 115-125LM/W
- LM79/70 reports and TM21 data available

## Applications

- Sports stadiums
- Architectural settings
- Warehouse
- Industrial settings
- Parking structures

# EZ HID Retrofit Solution

Reference: 60893



Model #	Ref#	Lumens	LmW	Color Temp (°K)	Watt	Input Voltage
SNRK-13L-40K-UL-DM	60708	11695	114	4000	102	120-277 V
SNRK-13L-50K-UL-DM	60893	11695	114	5000	103	120-277 V
SNRK-19L-50K-UL-DM	60895	18709	123	5000	152	120-277 V
SNRK-19L-40K-UL-DM	60710	18709	123	4000	152	120-277 V
SNRK-30L-50K-UL-DM	60897	28013	118	5000	237	120-277 V

Ex. SNRK-(30L) 28013 Lumens - (50K) 5,000 Kelvin - (UL) Universal Voltage 120-277V

## Features

- Direct replacement for HID fixture
- Power factor: ≥0.9
- Instant on to full brightness
- Workable voltage: 90-305V or 180-528V
- 0-10V dimming standard
- UL, DLC, RoHS, and FCC certified
- Flexible mounting bracket
- 5-year warranty

## Applications

- Canopy
- Highbay
- Bollards
- Outdoor shoe box and cobra head



# Hazardous Location Fixtures

Reference: 61457



Model #	Ref#	Lumens	LmW	Color Temp (°K)	Watt	Input Voltage
HLNB-9L-50K-UL-NPT	61457	9750	150	5000	65	120-277 V
HLNB-9L-50K-UL-STA	61636	9750	150	5000	65	120-277 V
HLNB-251	61634	25-degree stanchion mount bracket				

Ex. (HLN) Hazardous Light - (10L) 10,000 Lumens - (50K) 5,000 Kelvin - (UL) Universal Voltage 120-277V

Features HLN	Features HLNB
<ul style="list-style-type: none"> <li>• Rugged die-cast aluminum construction</li> <li>• IP66 rated for high ingress protection</li> <li>• Operation temperature: -40°C to 60°C / -40°F to 140°F</li> <li>• Sealed fixture for Class I Division 2 Hazardous Location Group A, B, C &amp; D</li> <li>• Mounting options available</li> <li>• Tempered glass lens</li> <li>• Power factor: ≥0.95</li> <li>• Instant on to full brightness</li> <li>• Corrosion-proof grade - WF2</li> <li>• IK Rating - IK08</li> <li>• Operating temp: -40°C to +60°C / -40°F to +140°F</li> <li>• Input voltage: 120-277V</li> <li>• Workable voltage: 90-305V</li> <li>• UL, DLC Premium, RoHS, and FCC certification</li> </ul>	<ul style="list-style-type: none"> <li>• Rugged die-cast aluminum construction</li> <li>• IP66 rated for high ingress protection</li> <li>• Sealed fixture for Class I Division 2 Hazardous Location Group A, B, C, &amp; D Class II Division 1, Group E, F, G Class III Division 1</li> <li>• UL, DLC Premium Certified</li> <li>• Up to 150 Lm/W</li> <li>• 5-year warranty</li> </ul>

Applications
<ul style="list-style-type: none"> <li>• Oil refineries</li> <li>• Steel mills</li> <li>• Petrochemical plants</li> <li>• Wastewater treatment</li> <li>• Manufacturing plants</li> </ul>

# ALSET LED WARRANTY

## 5-YEAR LIMITED WARRANTY

NuWave LLC warrants that this luminaire, when purchased new and in its original packaging, will be free from defects in material and workmanship and is guaranteed to last 5 years from the date of original purchase.

If this product does not conform to the warranty or guarantee, NuWave LLC, at its discretion, will send you a replacement luminaire or refund your purchase price upon presentation of purchase receipt and your return of the luminaire, excluding shipping and handling, and labor costs.

Warranty and guarantee are void if product is subject to, but not limited to: accidents, acts of God, neglect, abuse or misuse, vandalism, improper installation, modification, power surges, faulty service by persons other than the seller or their authorized service provider, or misuse per caution statement (see caution statement on product package). NuWave LLC shall make the final determination of product suitability or defect. This warranty shall be void if product is used for purposes other than those for which it was designed.

For warranty or other questions, please call 800-689-2573 or visit the website [www.ALSETLED.com](http://www.ALSETLED.com).

REPLACEMENT OR REFUND IS THE SOLE REMEDY AVAILABLE, IN LIEU OF ALL OTHER WARRANTIES, EXPRESS OR IMPLIED, INCLUDING ANY WARRANTY OF MERCHANTABILITY OR FITNESS FOR A PARTICULAR PURPOSE. INCIDENTAL AND CONSEQUENTIAL DAMAGES ARE HEREBY EXPRESSLY EXCLUDED. The above limitation or exclusion may not be applicable to you if exclusion or limitation of incidental or consequential damages is prohibited by your state. This warranty gives you specific legal rights, and you may also have other rights which vary from state to state.

## 7-YEAR LIMITED WARRANTY

NuWave LLC warrants that this luminaire, when purchased new and in its original packaging, will be free from defects in material and workmanship and is guaranteed to last 7 years from the date of original purchase.

If this product does not conform to the warranty or guarantee, NuWave LLC, at its discretion, will send you a replacement luminaire or refund your purchase price upon presentation of purchase receipt and your return of the luminaire, excluding shipping and handling, and labor costs.

Warranty and guarantee are void if product is subject to, but not limited to: accidents, acts of God, neglect, abuse or misuse, vandalism, improper installation, modification, power surges, faulty service by persons other than the seller or their authorized service provider, or misuse per caution statement (see caution statement on product package). NuWave LLC shall make the final determination of product suitability or defect. This warranty shall be void if product is used for purposes other than those for which it was designed.

For warranty or other questions, please call 800-689-2573 or visit the website [www.ALSETLED.com](http://www.ALSETLED.com).

REPLACEMENT OR REFUND IS THE SOLE REMEDY AVAILABLE, IN LIEU OF ALL OTHER WARRANTIES, EXPRESS OR IMPLIED, INCLUDING ANY WARRANTY OF MERCHANTABILITY OR FITNESS FOR A PARTICULAR PURPOSE. INCIDENTAL AND CONSEQUENTIAL DAMAGES ARE HEREBY EXPRESSLY EXCLUDED. The above limitation or exclusion may not be applicable to you if exclusion or limitation of incidental or consequential damages is prohibited by your state. This warranty gives you specific legal rights, and you may also have other rights which vary from state to state.

## LIMITED WARRANTY-STREET/PARKING LOT LUMINAIRES

NuWave LLC warrants that this luminaire, when purchased new and in its original packaging, will be free from defects in material and workmanship and is guaranteed to last 7 years from the date of original purchase.

If this product does not conform to the warranty or guarantee, NuWave LLC, at its discretion, will send you a replacement luminaire or refund your purchase price upon presentation of purchase receipt and your return of the luminaire, excluding shipping and handling, and labor costs.

Warranty and guarantee are void if product is subject to, but not limited to: accidents, acts of God, neglect, abuse or misuse, vandalism, improper installation, modification, power surges, faulty service by persons other than the seller or their authorized service provider, or misuse per caution statement (see caution statement on product package). NuWave LLC shall make the final determination of product suitability or defect. This warranty shall be void if product is used for purposes other than those for which it was designed.

For warranty or other questions, please call 800-689-2573 or visit the website [www.ALSETLED.com](http://www.ALSETLED.com).

REPLACEMENT OR REFUND IS THE SOLE REMEDY AVAILABLE, IN LIEU OF ALL OTHER WARRANTIES, EXPRESS OR IMPLIED, INCLUDING ANY WARRANTY OF MERCHANTABILITY OR FITNESS FOR A PARTICULAR PURPOSE. INCIDENTAL AND CONSEQUENTIAL DAMAGES ARE HEREBY EXPRESSLY EXCLUDED. The above limitation or exclusion may not be applicable to you if exclusion or limitation of incidental or consequential damages is prohibited by your state. This warranty gives you specific legal rights, and you may also have other rights which vary from state to state.